

**Steel drums****Tight Head Drum – DG 55**

(216,5 litres)

**Drum for general use, suitable for shipment in ISO containers.**

The production and sales of container drums are the main activities of the Greif company in the field of packaging and services. The wide range of steel drums complies with strict regulations and requirements of petrochemical, chemical, pharmaceutical and food industry. Drums are manufactured with the latest technology and in accordance with the UN regulations for the transportation and storage of dangerous goods as well as with national and international legislation. This ensures optimum protection of a wide spectrum of packaged products, which meet the criteria for dangerous and non-dangerous goods.

- Protection of the external surface is ensured with environment-friendly water based paint that meets all legislative requirements.
- Drums can be delivered uncoated, with external coating in one or more colours, internally coated with special paint RDL® or they can be manufactured from double-side hot-dip galvanized steel sheets.
- All drum types can be supplied with a silk screen printed customer's logo.
- Drums with raw surface of the interior are suitable for packaging products that do not react with steel.
- Steel drums production complies with strict UN regulations for packing dangerous goods in the packaging groups I / X, II / Y, III / Z.
- The tightness of each drum is checked with an automatic testing device. This guarantees the highest safety of the drums for transport and storage.

**Standard Specification****Steel Sheets**

- Plain and coated drums are produced from steel sheets FeP01 produced in accordance to EN 10 130 and their properties comply with EN 10 131 and their national equivalents.

**Closures**

The drums are supplied with a combination of Tri-Sure® 4S® G2" and G3/4" closures in the lid. Screw closures comply with the international standards of EN ISO 15750-3. Closures can be closed and sealed with Tab-Seal® caps in neutral or customer design. Closure flanges have standard sealing with a high-resistance system of 4S® sealing rings.

**Construction**

- **Body seam:**  
Continuous resistance weld.
- **Standards:**  
Drums are produced in accordance with EN ISO 15750-2.

**Classification according to the type of transport**

In compliance with the valid legislation and legislative executive regulations are drums of the Greif company production tested in accordance with the UN recommendations specified in Transports of dangerous goods – Model regulations and the sections of the International Collection for Transportation Chains as RID/ADR/IMDG – Code/ ICAO – IATA/ADN.



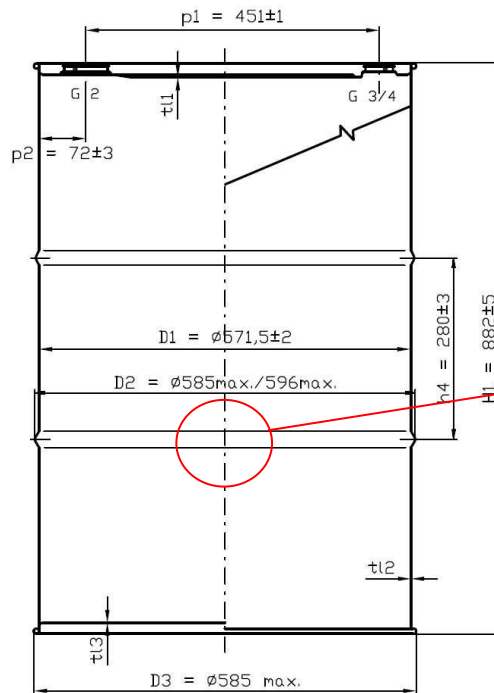
## Steel drums

### Tight Head Drum – DG 55

(216,5 litres)

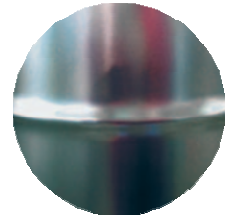


#### Drum dimensions



#### Beads/Corrugation

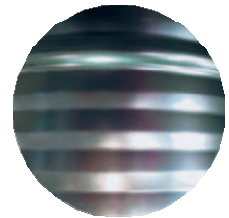
Type A



Type B



Type C



#### Body configuration

In the basic configuration Drums are provided with two rolling beads in each thickness variant – type A. By 1.0 mm - 1.2 mm thickness the Spiraltainer® reinforcement can be added – type B. Combination of Spiraltainer® reinforcement and 2 x 3 additional corrugations – type C – is optimal for drum bodies with thickness less than 1.00 mm. Type C enhances the body resistance against deformations by radial forces during transport or manipulation.

#### Spiraltainer®

Drums with Spiraltainer® reinforcement have increased resistance against decompression in comparison to conventional rolling beads of type A. Drums with Spiraltainer® reinforcement enable filling of substances under higher temperatures without the risk of drum body deformation.

#### Bottom/lid to body seaming

The seam is done with a safety double seaming Spiralon®.

#### UN Code marking

The UN code is embossed on the drum bottom and printed on the lower part of the drum body in accordance with international regulations.

#### Compatibility

Drums with all types of beads/corrugation at Ø 585 mm are fully compatible with 20 and 40 feet ISO containers which can hold 80 or 160 filled drums placed by fours next to each other.

The compatibility is also ensured by using of 800 x 1200 mm or 1200 x 1200 mm pallets.

#### Legislation

The products of Greif Czech Republic a.s. are supplied in accordance with the valid legislation.

Greif Czech Republic a.s.

Konečná 252

400 01 Ústí nad Labem

Czech Republic

VAT No.: CZ28708229

Telephone: +420 475 668 911, +420 475 668 941-2

Fax: +420 475 668 960, +420 475 668 962

e-mail: info.cz@greif.com

www.greif-cz.com